

8

7

6

5

4

3

2

1

D

C

B

A

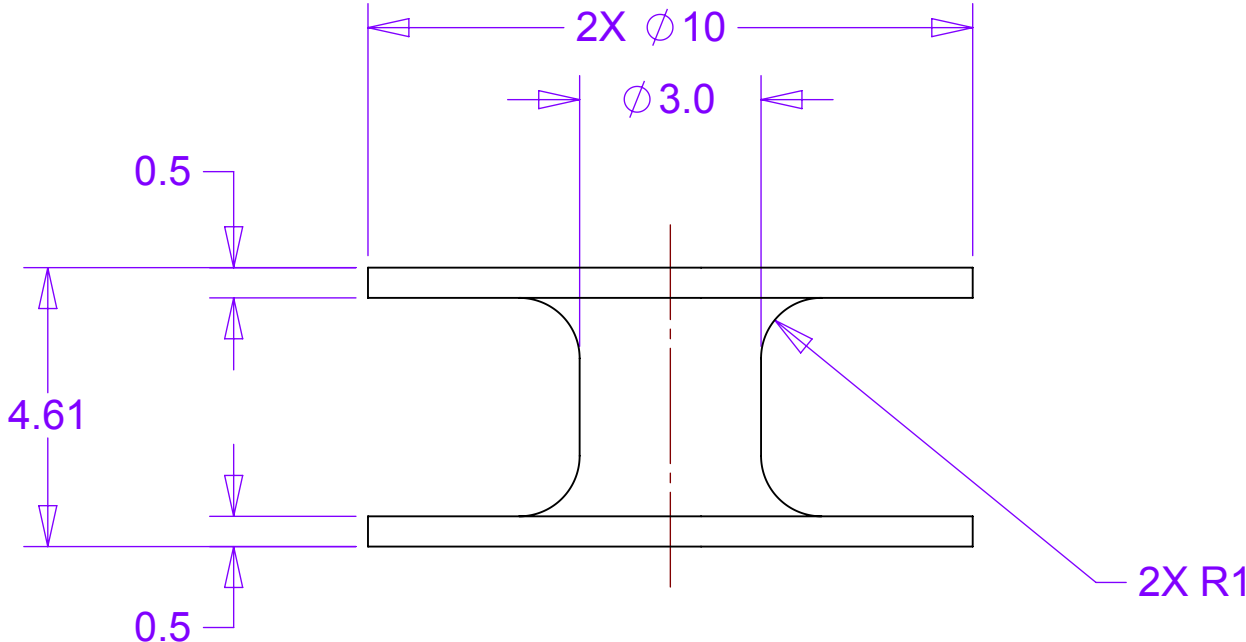
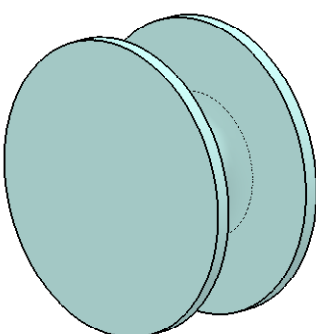
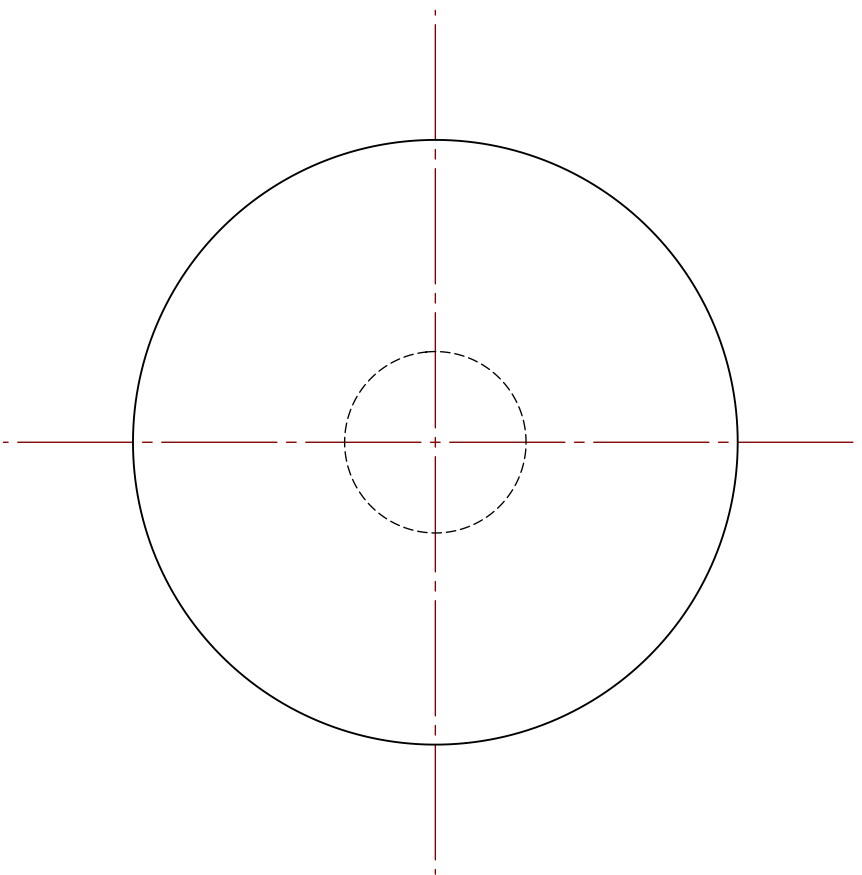
D

C

B

A

REVISIONS		DATE	APPROVED
REV	DESCRIPTION		
A	Revised & Redrawn	05/19/10	RJ Ponchione
	Total was "Half Station 1 Support Panel Core"		
	Material was ALLCOMP K3		

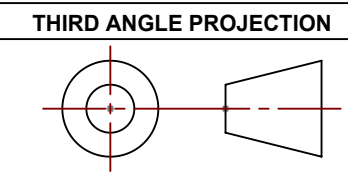


MATERIAL: PEEK

NOTES: UNLESS OTHER WISE SPECIFIED

1. ALL DIMENSIONS IN MILLIMETERS
2. DIMENSIONS AND TOLERANCING PER ASME Y14.5M-1994
3. SURFACE TEXTURE PER ANSI/ASME B 46.1-1985
4. ALL INSIDE CORNERS TO BE .4 RADIUS MAX
5. PART NUMBER (DRAWING NO., DASH NO., REVISION NO., SERIAL NO.) TO BE CLEARLY MARKED ON THE PACKAGING BAG OR PART ITSELF.

THIS DOCUMENT CONTAINS INFORMATION THAT IS THE PROPRIETARY PROPERTY OF HYTEC, INC.
REPRODUCTION, DISCLOSURE, OR RELEASE TO OTHERS, MANUALLY OR ELECTRONICALLY,
IS STRICTLY PROHIBITED WITHOUT THE PRIOR WRITTEN CONSENT OF HYTEC, INC.



UNLESS OTHERWISE SPECIFIED: DIMENSIONS ARE IN MILLIMETERS -TOLERANCES-		CAD GENERATED DRAWING, DO NOT MANUALLY UPDATE DO NOT SCALE DRAWING		HYTEC, INC			
DECIMALS X = +/- .5 X = +/- .1 .XX = +/- .01 .XXX = +/- .001				TITLE PHENIX CENTRAL UPGRADE FVTX HALF STATION SUPPORT PANEL CORE BOBBIN			
FINISH			SIGNATURE	DATE	DWG. NO.	SIZE	SHEET NO.
PART NO. 111-PHX-02-3801-1		Designer	Roger L. Smith	3/9/2009	111-PHX-02-3801	D	1 of 1
		Drawn	Roger L. Smith	3/9/2009			
		Checked	RJ Ponchione	4/12/2010			
		Engineer	RJ Ponchione	3/9/2009			
		Approved	RJ Ponchione	4/12/2010			
					SCALE 8:1	REVISION A	

8

7

6

5

4

3

2

1